



# RAMBHA COLLEGE OF EDUCATION

MANAGED BY : RAMBHA SOCIAL WORK & EDUCATIONAL TRUST



## RAMBHA COLLEGE OF EDUCATION

MANAGED BY : RAMBHA SOCIAL WORK & EDUCATIONAL TRUST

### ENERGY CONSERVATION POLICY

Installation of solar panels will reduce carbon emissions and promote the development of renewable energy. A 15 KW solar panel has been installed in our college for power generation. Solar energy is used extensively in our educational institution to save energy. In order to establish awareness about conserving electricity and utilizing natural resources like sunlight and air, the management conferred with the faculty, non-teaching staff, and student teachers regarding the usage of energy resources like electricity.

1. Everyone on campus is encouraged to leave the doors and windows open on both sides of the classrooms, hallways, and labs in order to maximize the natural light resources of sunlight and air.
2. When no work is being done, instructions are given to switch off the lights of the computer, lab and every room.
3. Remind people occasionally about the use of non-conventional energy and how it affects their eyes, body temperature, and overall health.
4. To spread the importance and uses of non-conventional energy among the stakeholders of the academic institution and encourage them to avoid the use of conventional energy in order to promote balance in the environment.
5. Using minimum level of air conditioner in computer lab, conference hall and other places where ingress of natural air is present.
6. All the teachers and students of the institute are motivated for tree plantation so that the amount of oxygen in the atmosphere is maintained.
7. To encourage the stakeholders of the academic institution to spread the importance and uses of non-conventional and avoid the uses of conventional energy. It promotes balance in environment.

IQAC INCHARGE

*Ganga*  
Rambha College of Education  
IQAC-COORDINATOR

*[Signature]*  
CHAIRPERSON

*Rajani*  
Principal  
Rambha College of Education  
GITILATA  
PRINCIPAL

☎ 9102999123, 9102999124    ✉ contact.rambha@gmail.com    🌐 rambhacollege.in

📍 AT + P.O. - GITILATA, P.S. - POTKA, EAST SINGHBHUM, 832107, JHARKHAND

*Rajani*  
Principal  
Rambha College of Education  
Gitilata, JSR-832107

☎ 9102999123, 9102999124    ✉ contact.rambha@gmail.com    🌐 rambhacollege.in

📍 AT + P.O. - GITILATA, P.S. - POTKA, EAST SINGHBHUM, 832107, JHARKHAND



# RAMBHA COLLEGE OF EDUCATION

MANAGED BY : RAMBHA SOCIAL WORK & EDUCATIONAL TRUST



**KGDC**  
ENTERPRISES LLP

## 15 KW HYBRID SOLAR POWER PLANT AT RAMBHA COLLEGE, JAMSHEDPUR



*Rambha*  
Principal  
Rambha College of Education  
Girilata, JSR-832107



9102999123, 9102999124



contact.rambha@gmail.com



rambhacollege.in



AT + P.O. - GITILATA, P.S. - POTKA, EAST SINGHBHUM, 832107, JHARKHAND





# RAMBHA COLLEGE OF EDUCATION

MANAGED BY : RAMBHA SOCIAL WORK & EDUCATIONAL TRUST



  
Principal  
Rambha College of Education  
Girilata, JSR-832107



9102999123, 9102999124



contact.rambha@gmail.com



rambhacollege.in



AT + P.O. - GITILATA, P.S. - POTKA, EAST SINGHBHUM, 832107, JHARKHAND



# RAMBHA COLLEGE OF EDUCATION

MANAGED BY : RAMBHA SOCIAL WORK & EDUCATIONAL TRUST



  
Principal  
Rambha College of Education  
Girilata, JSR-832107



9102999123, 9102999124



contact.rambha@gmail.com



rambhacollege.in



AT + P.O. - GITILATA, P.S. - POTKA, EAST SINGHBHUM, 832107, JHARKHAND



# RAMBHA COLLEGE OF EDUCATION

MANAGED BY : RAMBHA SOCIAL WORK & EDUCATIONAL TRUST



Galaxy S21 FE 5G

*Rambha*  
Principal  
Rambha College of Education  
Girilata, JSR-832107



9102999123, 9102999124



contact.rambha@gmail.com



rambhacollege.in



AT + P.O. - GITILATA, P.S. - POTKA, EAST SINGHBHUM, 832107, JHARKHAND



# RAMBHA COLLEGE OF EDUCATION

MANAGED BY : RAMBHA SOCIAL WORK & EDUCATIONAL TRUST



  
Principal  
Rambha College of Education  
Girilata, JSR-832107



9102999123, 9102999124



contact.rambha@gmail.com



rambhacollege.in



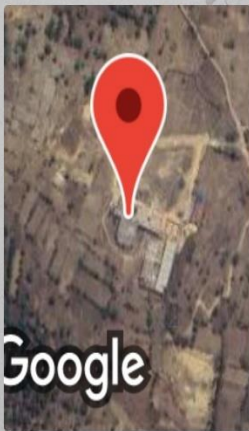
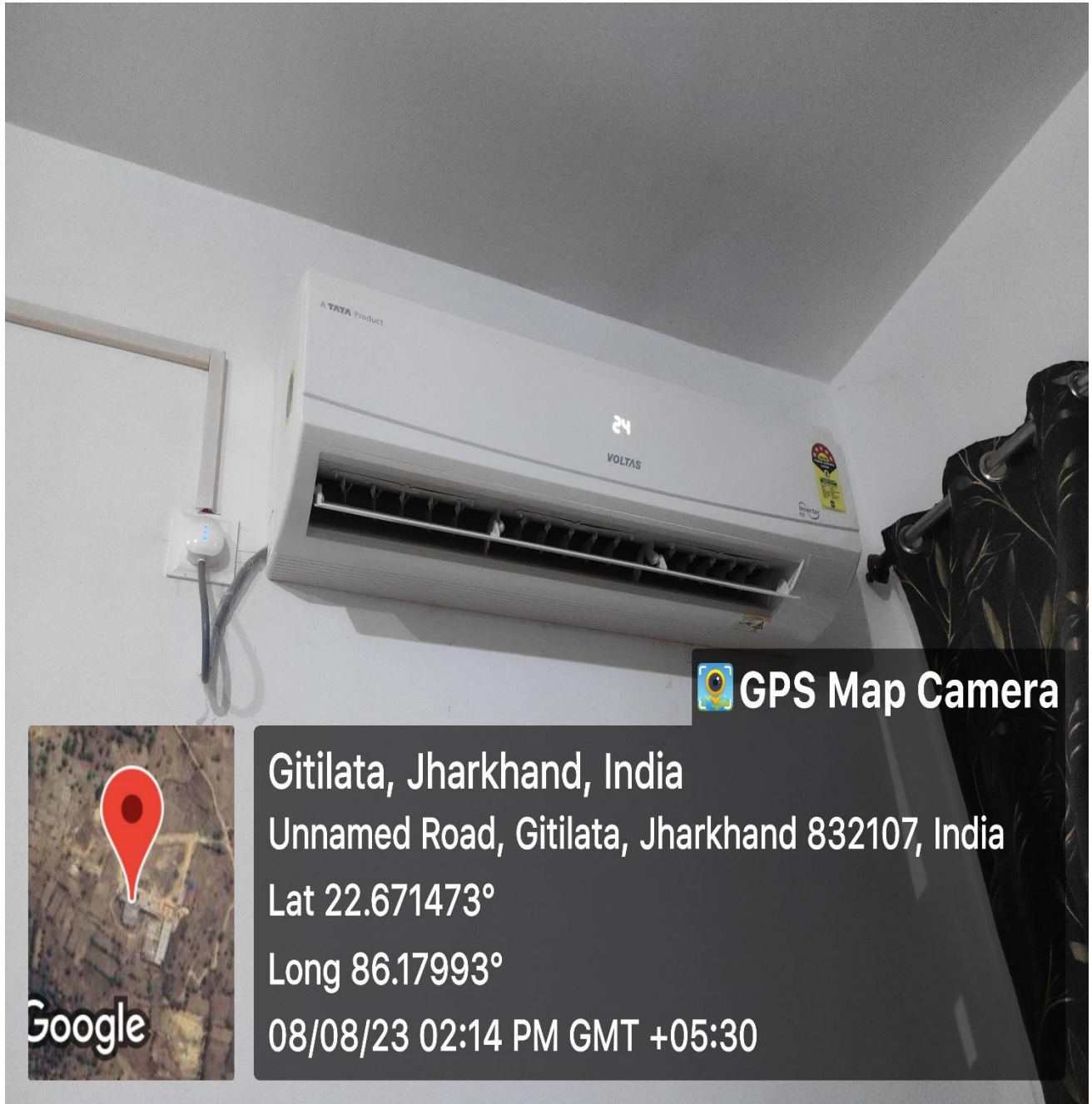
AT + P.O. - GITILATA, P.S. - POTKA, EAST SINGHBHUM, 832107, JHARKHAND





# RAMBHA COLLEGE OF EDUCATION

MANAGED BY : RAMBHA SOCIAL WORK & EDUCATIONAL TRUST



Gitilata, Jharkhand, India

Unnamed Road, Gitilata, Jharkhand 832107, India

Lat 22.671473°

Long 86.17993°

08/08/23 02:14 PM GMT +05:30

  
Principal  
Rambha College of Education  
Gitilata, JSR-832107

☎ 9102999123, 9102999124

✉ [contact.rambha@gmail.com](mailto:contact.rambha@gmail.com)

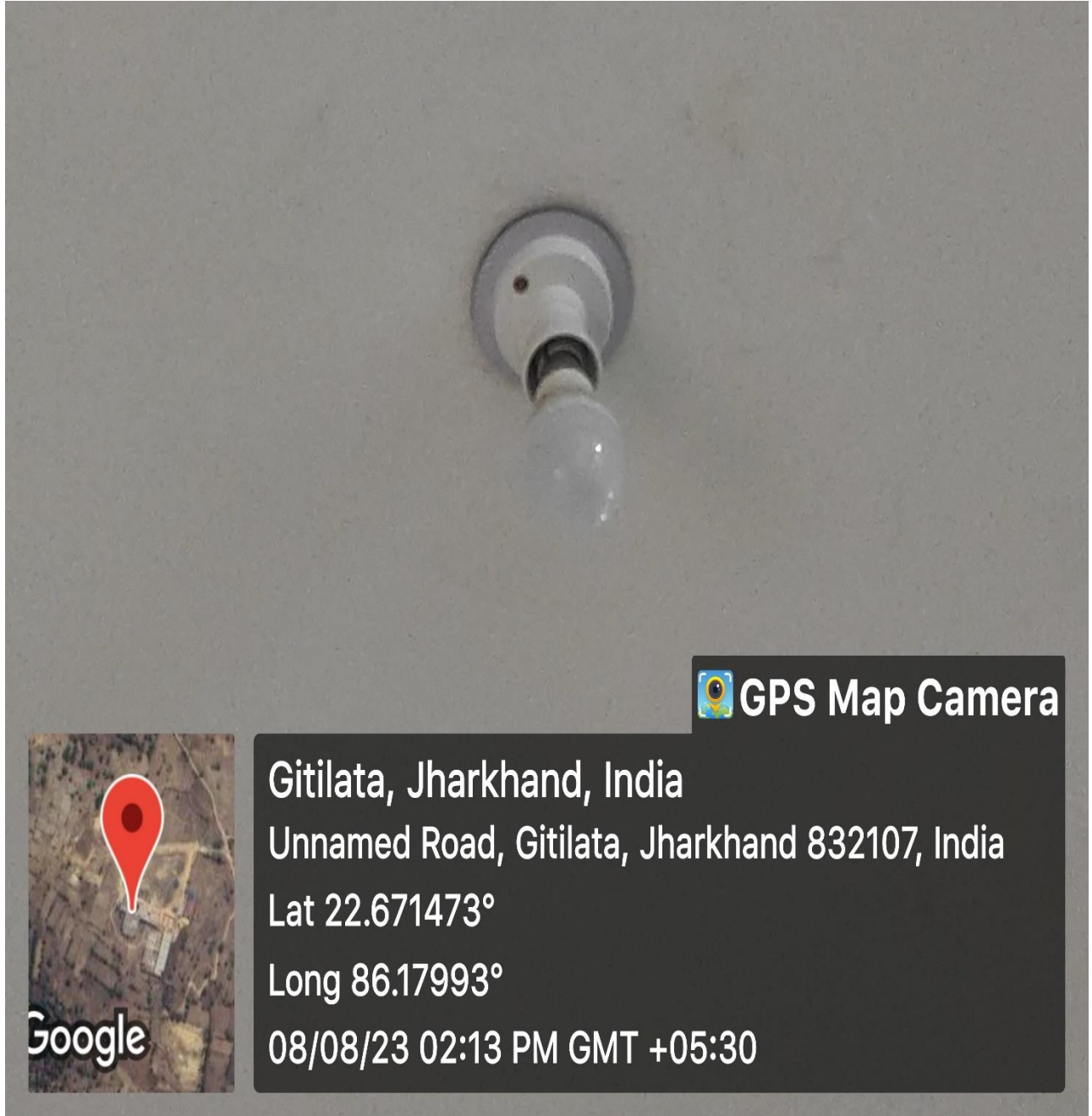
🌐 [rambhacollege.in](http://rambhacollege.in)

📍 AT + P.O. - GITILATA, P.S. - POTKA, EAST SINGHBHUM, 832107, JHARKHAND

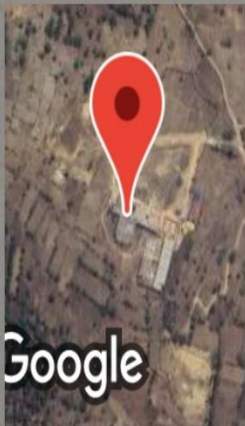


# RAMBHA COLLEGE OF EDUCATION

MANAGED BY : RAMBHA SOCIAL WORK & EDUCATIONAL TRUST



 **GPS Map Camera**



**Gitilata, Jharkhand, India**

**Unnamed Road, Gitilata, Jharkhand 832107, India**

**Lat 22.671473°**

**Long 86.17993°**

**08/08/23 02:13 PM GMT +05:30**

  
**Principal**  
Rambha College of Education  
Gitilata, JSR-832107



9102999123, 9102999124



contact.rambha@gmail.com



rambhacollege.in



AT + P.O. - GITILATA, P.S. - POTKA, EAST SINGHBHUM, 832107, JHARKHAND



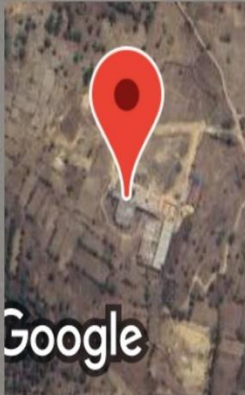


# RAMBHA COLLEGE OF EDUCATION

MANAGED BY : RAMBHA SOCIAL WORK & EDUCATIONAL TRUST



 **GPS Map Camera**



Gitilata, Jharkhand, India

Unnamed Road, Gitilata, Jharkhand 832107, India

Lat 22.671473°

Long 86.17993°

08/08/23 02:13 PM GMT +05:30

  
Principal  
Rambha College of Education  
Gitilata, JSR-832107



9102999123, 9102999124



contact.rambha@gmail.com



rambhacollege.in

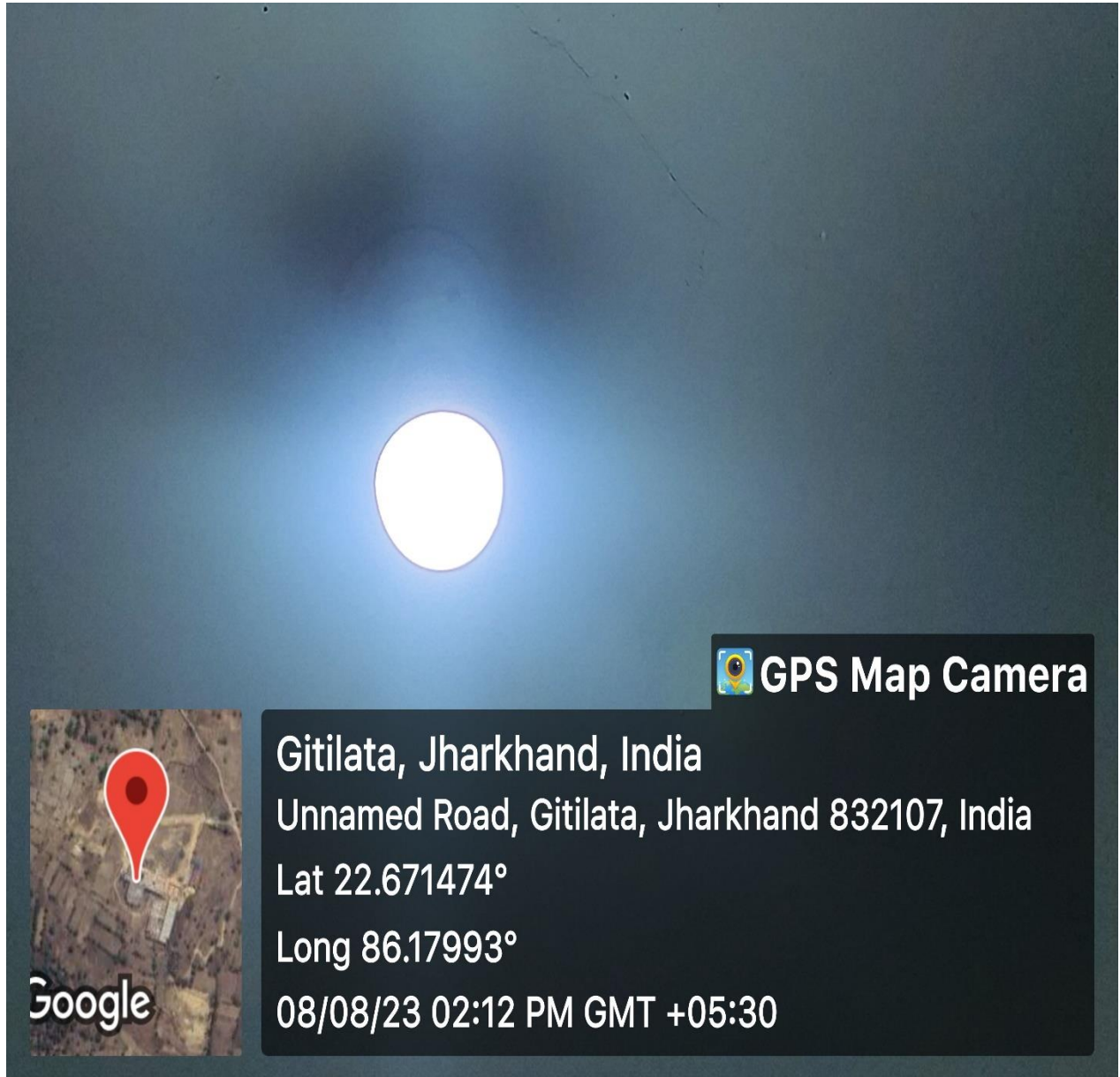


AT + P.O. - GITILATA, P.S. - POTKA, EAST SINGHBHUM, 832107, JHARKHAND



# RAMBHA COLLEGE OF EDUCATION

MANAGED BY : RAMBHA SOCIAL WORK & EDUCATIONAL TRUST



  
Principal  
Rambha College of Education  
Gitilata, JSR-832107



9102999123, 9102999124



contact.rambha@gmail.com



rambhacollege.in



AT + P.O. - GITILATA, P.S. - POTKA, EAST SINGHBHUM, 832107, JHARKHAND



# RAMBHA COLLEGE OF EDUCATION

MANAGED BY : RAMBHA SOCIAL WORK & EDUCATIONAL TRUST



*Rambha*  
Principal  
Rambha College of Education  
Girilata, JSR-832107



9102999123, 9102999124



contact.rambha@gmail.com



rambhacollege.in



AT + P.O. - GITILATA, P.S. - POTKA, EAST SINGHBHUM, 832107, JHARKHAND





# RAMBHA COLLEGE OF EDUCATION


MANAGED BY : RAMBHA SOCIAL WORK & EDUCATIONAL TRUST

## रंभा कॉलेज : ऊर्जा संरक्षण पर कार्यशाला



शपथ लेते कालेज के विद्यार्थी.

जमशेदपुर, 27 नवंबर ( रिपोर्टर ) : रंभा कॉलेज ऑफ एजुकेशन में आज एनएसएस के तहत संविधान दिवस मनाते हुए ऊर्जा संरक्षण पर कार्यशाला का आयोजन हुआ. एनएसएस प्रोग्राम ऑफिसर डॉ भूपेश चंद्र यादव के नेतृत्व में बच्चों ने संविधान दिवस पर बौद्धिक कार्यक्रम प्रस्तुत किया. व्याख्याता जयश्री पंडा के नेतृत्व में स्वराज फाउंडेशन के अंतर्गत ऊर्जा संरक्षण पर चर्चा की गई. सभी विद्यार्थियों को भविष्य में पर्यावरण असंतुलन से होने वाले खतरों के बारे में बताया गया. इसमें स्वराज फाउंडेशन से जुड़े सदस्य संजीव कुमार उपस्थित थे. इस अवसर पर कॉलेज के सचिव गौरव कुमार बचन ने विद्यार्थियों को भी उनके बेहतरीन उपलब्धि और प्रस्तुति के लिए सम्मानित किया. सम्मान पानेवाली छात्राओं में साइका, पूनम शर्मा, श्वेता कुमारी, नम्रता प्रधान, मेघमाला, जयंती तियू और राजीव बिरुआ के नाम शामिल हैं.

  
Principal  
Rambha College of Education  
Girilata, JSR-832107

9102999123, 9102999124

contact.rambha@gmail.com

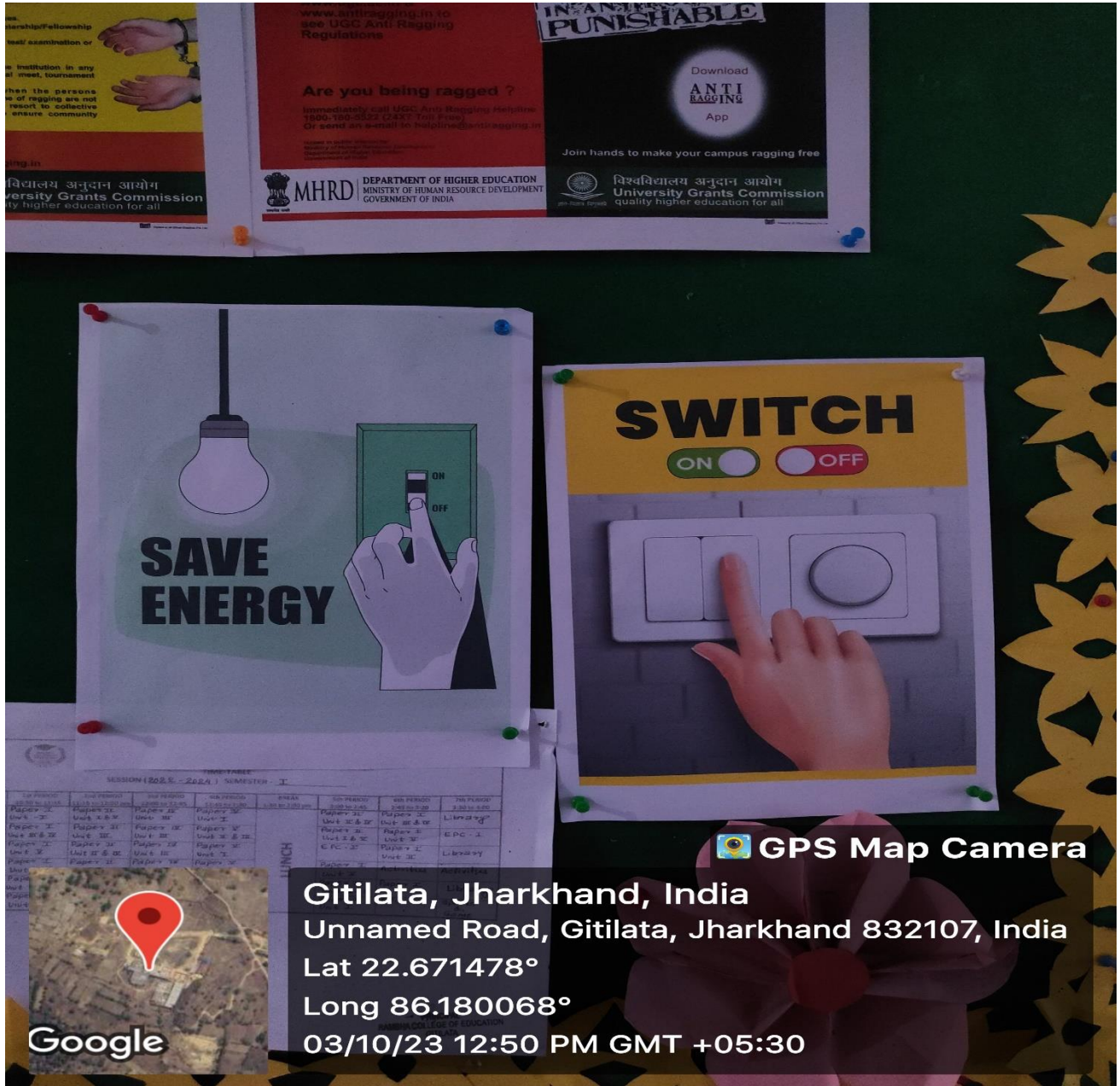
rambhacollege.in

AT + P.O. - GITILATA, P.S. - POTKA, EAST SINGHBHUM, 832107, JHARKHAND



# RAMBHA COLLEGE OF EDUCATION

MANAGED BY : RAMBHA SOCIAL WORK & EDUCATIONAL TRUST



*Rambha*  
Principal  
Rambha College of Education  
Gitilata, JSR-832107

☎ 9102999123, 9102999124    ✉ contact.rambha@gmail.com    🌐 rambhacollege.in

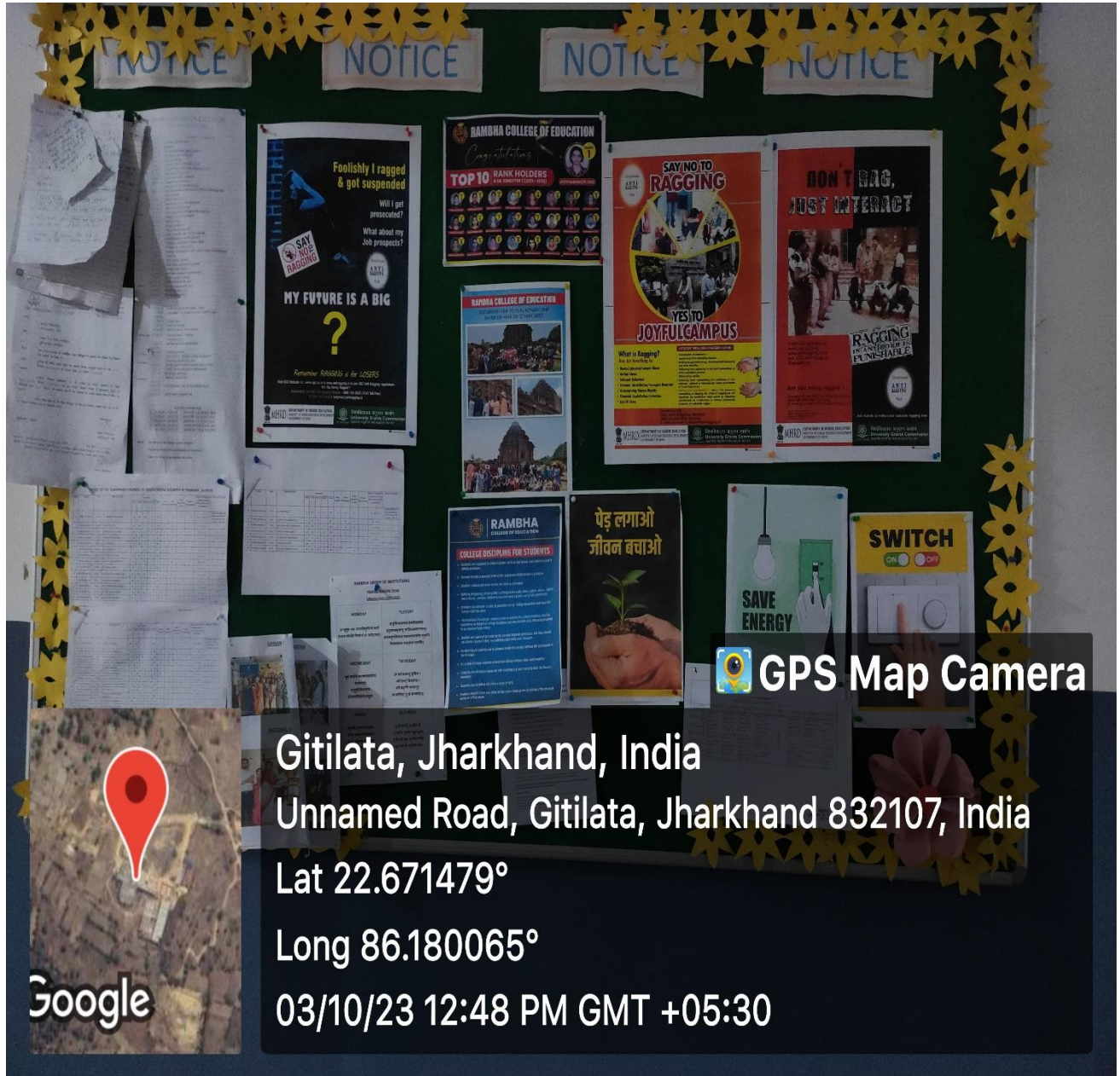
📍 AT + P.O. - GITILATA, P.S. - POTKA, EAST SINGHBHUM, 832107, JHARKHAND





# RAMBHA COLLEGE OF EDUCATION

MANAGED BY : RAMBHA SOCIAL WORK & EDUCATIONAL TRUST



Gitilata, Jharkhand, India

Unnamed Road, Gitilata, Jharkhand 832107, India

Lat 22.671479°

Long 86.180065°

03/10/23 12:48 PM GMT +05:30

Google

  
Principal  
Rambha College of Education  
Gitilata, JSR-832107

☎ 9102999123, 9102999124

✉ contact.rambha@gmail.com

🌐 rambhacollege.in

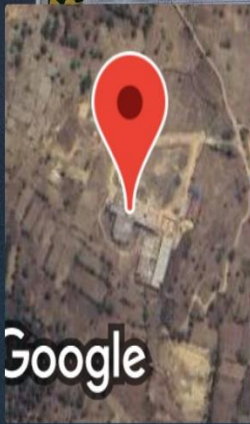
📍 AT + P.O. - GITILATA, P.S. - POTKA, EAST SINGHBHUM, 832107, JHARKHAND





# RAMBHA COLLEGE OF EDUCATION

MANAGED BY : RAMBHA SOCIAL WORK & EDUCATIONAL TRUST



Gitilata, Jharkhand, India

Unnamed Road, Gitilata, Jharkhand 832107, India

Lat 22.671487°

Long 86.180018°

03/10/23 12:51 PM GMT +05:30

*Rajawati*  
Principal  
Rambha College of Education  
Gitilata, JSR-832107

☎ 9102999123, 9102999124

✉ contact.rambha@gmail.com

🌐 rambhacollege.in

📍 AT + P.O. - GITILATA, P.S. - POTKA, EAST SINGHBHUM, 832107, JHARKHAND