



RAMBHA COLLEGE OF EDUCATION

MANAGED BY : RAMBHA SOCIAL WORK & EDUCATIONAL TRUST

RAMBHA COLLEGE OF EDUCATION

GITILATA, JAMSHEDPUR, JHARKHAND - 832107

GREEN AUDIT REPORT

2022-2023



CONDUCTED BY:--

IQAC AND GREEN AUDIT TEAM

RAMBHA COLLEGE OF EDUCATION

☎ 9102999123, 9102999124

✉ contact.rambha@gmail.com

🌐 rambhacollege.in

📍 AT + P.O. - GITILATA, P.S. - POTKA, EAST SINGHBHUM, 832107, JHARKHAND



RAMBHA COLLEGE OF EDUCATION

MANAGED BY : RAMBHA SOCIAL WORK & EDUCATIONAL TRUST



GREEN AUDIT

A green audit is an official examination of the effects a college has on the environment. As a part of such practice, an internal environmental audit (green audit) is conducted to evaluate the actual scenario at the campus. The Green Audit focuses on the green campus, waste management, water management, air pollution management, etc. that are being implemented by college management. Educational institutions today are becoming more sensitive to environmental factors and are becoming more eco-friendly. A green audit can be a useful tool for a college to determine how and where they are using the most energy or water resources. The college can then consider how to implement the changes and make savings. It can also be used to determine the type and volume of waste that can be used for a recycling project or to improve waste minimization plants. It can also create health consciousness and promote environmental awareness. It provides staff and students with a better understanding of the green impact on campus. A clean and healthy environment aids in effective learning and provides a conducive learning environment. We also have a pond in the college campus which is used for irrigation of all flora & fauna. Rain water is collected in the pond.

☎ 9102999123, 9102999124

✉ contact.rambha@gmail.com

🌐 rambhacollege.in

📍 AT + P.O. - GITILATA, P.S. - POTKA, EAST SINGHBHUM, 832107, JHARKHAND

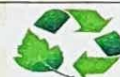


RAMBHA COLLEGE OF EDUCATION

MANAGED BY : RAMBHA SOCIAL WORK & EDUCATIONAL TRUST

About college:--

Name of college	Rambha college of education
Establishment year	2018
Affiliated to	Kolhan University
AISHE CODE	C-60983-2022
Type of College	Co-education
Name of the Principal	Dr. Santosh Kumar
Total Intake Capacity in B.Ed.	100
Financial Category	Self Aided
College website --	https://rambhadedcollege.ac.in/
Type of College	Co-education



The Aims and Benefits of a Green Audit

- To improve environmental standards.
- To impart environmental education through a systematic environmental approach.
- To make sure that rules and regulations are taken care of.
- Sustainable use of natural resources in campus.
- Financial savings through a reduction in resource use.
- Curriculum enrichment through practical experience.
- Development of ownership and personal and social responsibility for the college campus and its environment.
- Developing environmental ethics and value systems in young people

9102999123, 9102999124 contact.rambha@gmail.com rambhacollege.in

AT + P.O. - GITILATA, P.S. - POTKA, EAST SINGHBHUM, 832107, JHARKHAND



RAMBHA COLLEGE OF EDUCATION

MANAGED BY : RAMBHA SOCIAL WORK & EDUCATIONAL TRUST

AUDIT PARTICIPANTS

Sr. no	NAME	DESIGNATION
1	Dr. Santosh Kumar	Principal, Rambha College of Education
2	Dr. Ramanand Yadav	Asst.Prof.
3	Amrendra Kumar	Asst.Prof.
4	Sumanlata	Lecturer
5	Siddharth Chatterjee	Auditor
6	Vaibhav Kumar Das	Student
7	Monika Kindo	Student



The following were the initiatives by the college management in green initiative:

1. The management developed separate teams for implementing green policy in the Campus.
2. Regular evaluation system has been established with monitoring cells for green Activities in the campus.
3. The management has allotted budget for implementing green policies in the Campus.
4. Clubs that are related to green activities are encouraged to conduct programs in And around the campus.
5. The management is keen in conducting awareness programs based on its green Policies.
6. Always gives support to NSS Activities for plantation throughout the year.
7. In collaboration with various social organizations, tree plantation programs are organized. For instance, we have planted trees in the college campus in association with Rotary Club, Femina, and Consumer Awareness Association (Grahak Panchayat)."



9102999123, 9102999124



contact.rambha@gmail.com



rambhacollege.in



AT + P.O. - GITILATA, P.S. - POTKA, EAST SINGHBHUM, 832107, JHARKHAND



RAMBHA COLLEGE OF EDUCATION

MANAGED BY : RAMBHA SOCIAL WORK & EDUCATIONAL TRUST



EXECUTIVE SUMMARY

- The college has prepared a green environmental policy and has made efforts for sustainable development on its campus.
- The college has formed a team of faculties and students that works to maintain biodiversity in the campus and also participate in preventing pollution in society.
- The college has already done an internal green assessment under the green audit team of the college.
- The audit criteria are environmental cognizance, waste minimization and management, biodiversity conservation, water conservation, energy conservation, and environmental legislative compliance by the campus.
- This audit report contains observations and recommendations for improving environmental consciousness.

GREEN BELT AREA & BIO-DIVERSITY

The green belt area is meant for conservation of nature and the aesthetic value of the college premises. The green area of the college includes the plants, greenery, and sustainability of the campus to ensure that the buildings conform to green standards. This also helps in ensuring that the environmental policy is enacted, enforced, and reviewed using various environmental awareness programs.

☎ 9102999123, 9102999124

✉ contact.rambha@gmail.com

🌐 rambhacollege.in

📍 AT + P.O. - GITILATA, P.S. - POTKA, EAST SINGHBHUM, 832107, JHARKHAND



RAMBHA COLLEGE OF EDUCATION

MANAGED BY : RAMBHA SOCIAL WORK & EDUCATIONAL TRUST

OBSERVATIONS

The campus is located in the vicinity of approximately 50 types (species) of flora and fauna. There are about 1005 trees and 1200 bushes found on the college campus; about 15 acres of the campus area is grassland. Various tree plantation programs are being organized during the months of March and April at the college campus and surrounding villages through the NSS unit. This program helps in encouraging an eco-friendly environment that provides pure oxygen within the institute and raises awareness among villagers. The plantation program includes various types of indigenous species of ornamental and medicinal plants.

No. of trees planted on campus (in last five years): 1005

Types of trees planted that are environmentally friendly are listed below:

Neem, Indian Blackberry, Jackfruit, Mango, Guava, Teak, Exotic Flora, Asoka, Radhachuda, Tulsi, China Rose, Rose Marigold, Kachnar, tridax daisy, and different climbers and creepers; Madar, Papaya, Sugar Apple, Babool, Gooseberry, Lemon, Supari, Bel, Gulmohar, Saptarni, Palash, Palm tree, Date tree, Banana tree.

☎ 9102999123, 9102999124

✉ contact.rambha@gmail.com

🌐 rambhacollege.in

📍 AT + P.O. - GITILATA, P.S. - POTKA, EAST SINGHBHUM, 832107, JHARKHAND



RAMBHA COLLEGE OF EDUCATION

MANAGED BY : RAMBHA SOCIAL WORK & EDUCATIONAL TRUST

NOISE POLLUTION MANAGEMENT

It was observed that there are no industrial as well as sound generating activities near the Rambha College of education campus and it was revealed that due to a limited number of vehicles, the chances of noise pollution seem to be quite below of standard limit.

A) SILENCE ZONES IN THE COLLEGE

Various display boards have been placed in the library and other places for awareness to maintain silence in the college.

B) NOISE CONTROL IN THE COLLEGE

The college adopts a honking policy and prevents the use of any honking and noise on campus. Certain areas like the library and classrooms are declared as Silence Zone, and noise pollution is kept to a minimum on college campuses.

C) DG SET FOR POWER BACK-UP

The college had DG set as power backup and used it whenever there is a power cut-off.



9102999123, 9102999124

contact.rambha@gmail.com

rambhacollege.in

AT + P.O. - GITILATA, P.S. - POTKA, EAST SINGHBHUM, 832107, JHARKHAND



RAMBHA COLLEGE OF EDUCATION

MANAGED BY : RAMBHA SOCIAL WORK & EDUCATIONAL TRUST

GREENARY IN COLLEGE CAMPUS



9102999123, 9102999124



contact.rambha@gmail.com



rambhacollege.in



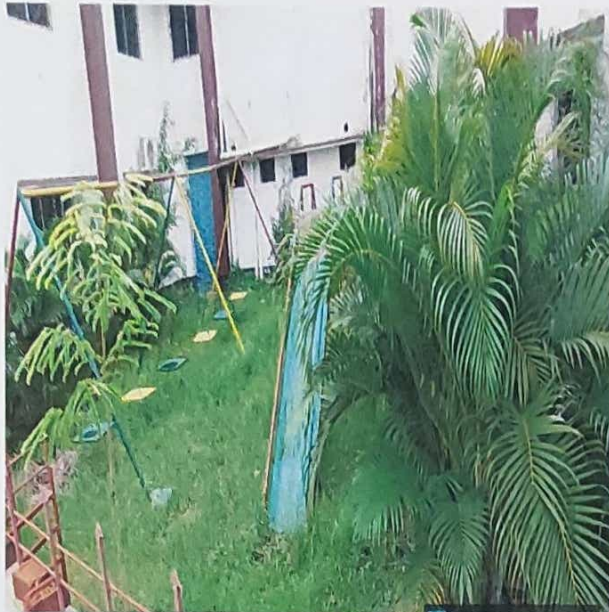
AT + P.O. - GITILATA, P.S. - POTKA, EAST SINGHBHUM, 832107, JHARKHAND



RAMBHA COLLEGE OF EDUCATION

MANAGED BY : RAMBHA SOCIAL WORK & EDUCATIONAL TRUST

BOTANICAL PLANTS



WATER BODY



PEDESTRIAN



☎ 9102999123, 9102999124

✉ contact.rambha@gmail.com

🌐 rambhacollege.in

📍 AT + P.O. - GITILATA, P.S. - POTKA, EAST SINGHBHUM, 832107, JHARKHAND



RAMBHA COLLEGE OF EDUCATION

MANAGED BY : RAMBHA SOCIAL WORK & EDUCATIONAL TRUST

CLEANLINESS AROUND PLANTS



WORKSHOP BY LECTURER RASHMI LUGUN ON -- JAL, JANGAL, ZAMIN



☎ 9102999123, 9102999124

✉ contact.rambha@gmail.com

🌐 rambhacollege.in

📍 AT + P.O. - GITILATA, P.S. - POTKA, EAST SINGHBHUM, 832107, JHARKHAND



RAMBHA COLLEGE OF EDUCATION

MANAGED BY : RAMBHA SOCIAL WORK & EDUCATIONAL TRUST

VERMICOMPOST

Vermicomposting is an example of converting biodegradable waste into organic manure for organic farming. It improves the biological and physical properties of the soil. After proper segmentation of the waste these are dumped into the waste pit and after some time it turns into compost. This manure is used for gardening and planting at Rambha College of Education.



☎ 9102999123, 9102999124

✉ contact.rambha@gmail.com

🌐 rambhacollege.in

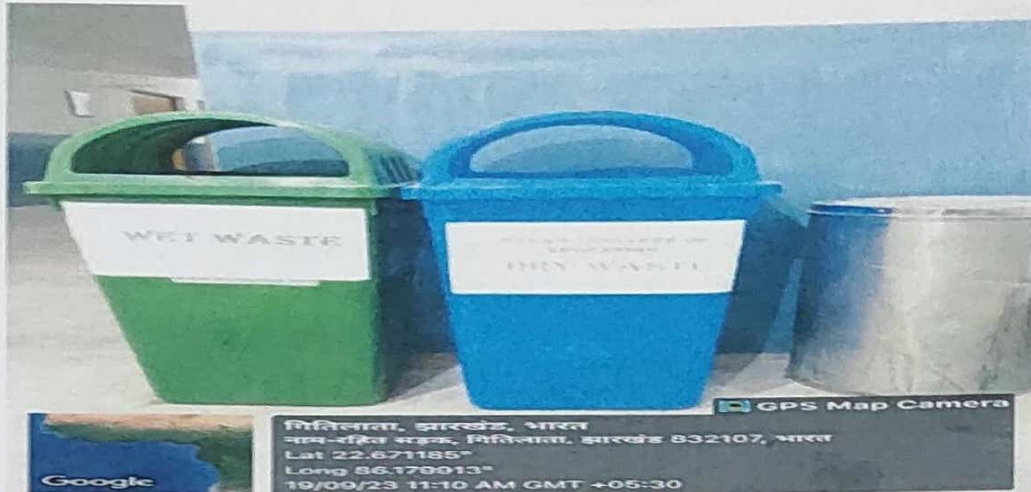
📍 AT + P.O. - GITILATA, P.S. - POTKA, EAST SINGHBHUM, 832107, JHARKHAND



RAMBHA COLLEGE OF EDUCATION

MANAGED BY : RAMBHA SOCIAL WORK & EDUCATIONAL TRUST

BLUE GREEN DUSTBIN



E-WASTE MANAGEMENT

E-waste stored in a particular location in store for exchange offer or dispose of in minimum price.



9102999123, 9102999124

contact.rambha@gmail.com

rambhacollege.in

AT + P.O. - GITILATA, P.S. - POTKA, EAST SINGHBHUM, 832107, JHARKHAND



RAMBHA COLLEGE OF EDUCATION

MANAGED BY : RAMBHA SOCIAL WORK & EDUCATIONAL TRUST


RECOMMENDATIONS

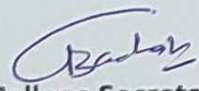


1. The biodiversity is to be maintained while considering the plantation in future.
2. Total 75% area is to be reserved for plantation.
3. The selection of tree species to be based on environmental conservation and Carbon sequestration values.
4. Watering scheduled to be planned according to the season.
5. Reuse of water shall be done instead of use of fresh water.
6. Display of environmental awareness poster should be there and the Prominent areas of Campus.
7. Increase plantation drives in nearby villages, local bodies in order to balance the carbon emission and absorption. –
8. Arrange training programs on environmental management system and nature conservation for schools and local people.
9. College should initiate a practice where all guests should be given a plant as a gift rather than a bouquet of flowers.
10. Involve lower hierarchy staff in environmental awareness programs and campaigns.
11. Messages should be displayed at various locations to Aware the People about Energy Savings.


IQAC INCHARGE

IQAC IN charge
Rambha College of Education


Principal
Rambha College of Education
Gitilata, Jamshedpur


College Secretary
Secretary
RAMBHA COLLEGE OF EDUCATION

☎ 9102999123, 9102999124

✉ contact.rambha@gmail.com

🌐 rambhacollege.in

📍 AT + P.O. - GITILATA, P.S. - POTKA, EAST SINGHBHUM, 832107, JHARKHAND